



Experimental Design

Veronica Palinsky

Client Profile

Both of my pieces of furniture are based off of the idea of positive and negative space. I want both of them to be usable in all forms and for each purpose with out having to move it or change it in any way. I don't want the furniture to look like it has more than one purpose until you sit down and inspect what they can do. I am a very casual eater, and these pieces are perfect for the casual diner.

Concept

- Cut outs
- Negative and positive space
- Primary ideas and images
- Architecture being used or not used
- Architecture creating space if it's wanted, and surface if it's wanted

Body Measurements

Waist-Top of Head

Inches

Lee	29.95"
Me	27.75"
Mom	28.2"
Megan	28"
Roger	26.85"

Top of Head-Mouth Inches

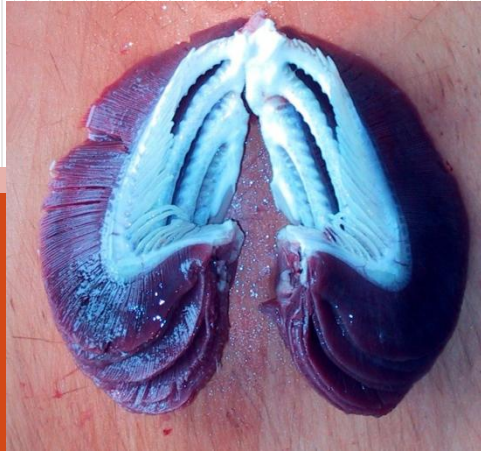
Lee	7.95"
Me	6.3"
Mom	7.2"
Megan	6.75"
Roger	6.5"

Waist-Mouth Inches

Lee	19"
Me	18.75"
Mom	19.75"
Megan	18"
Roger	16"

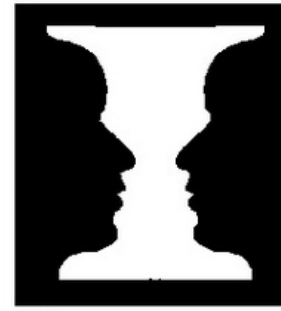


Concept Images

A woman in athletic wear (black sports bra and shorts) is posing in front of a large, glowing white silhouette of a muscular man. The silhouette is highly detailed, showing the man's physique. The background is black, making the white silhouette and the woman stand out.

Descubra o corpinho sarado escondido em algum lugar da sua balança.

COMPANHIA ATHLETICA



©MBE

©MBE



Current Applications



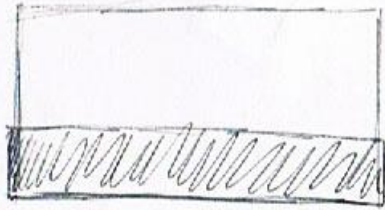




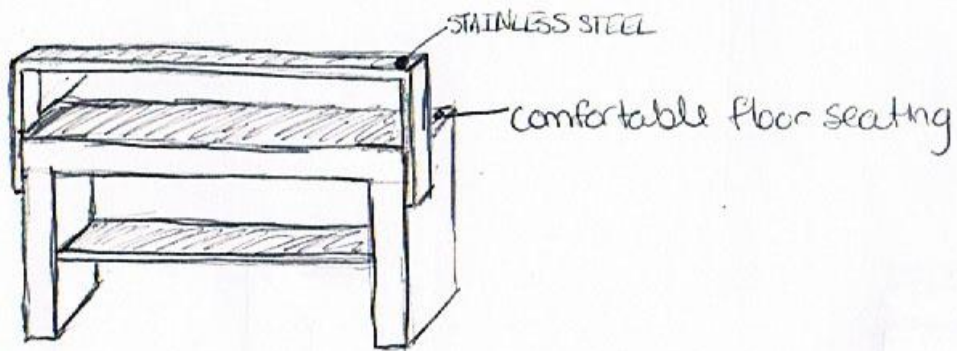
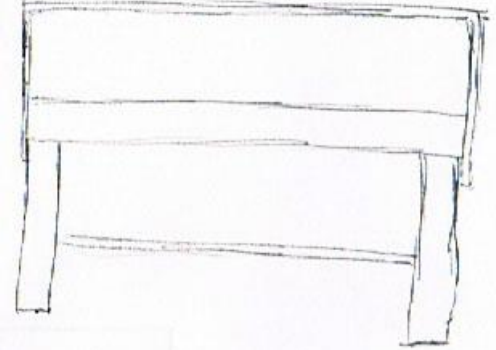
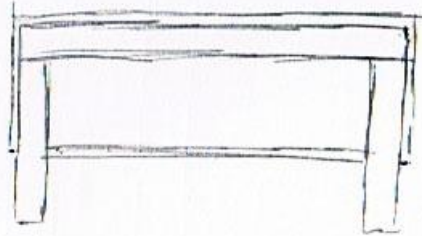


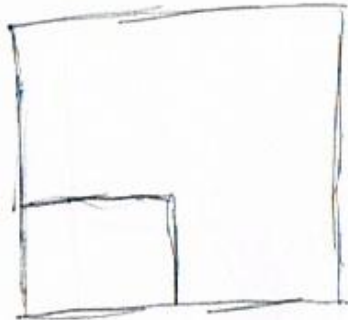


Sketches and Options

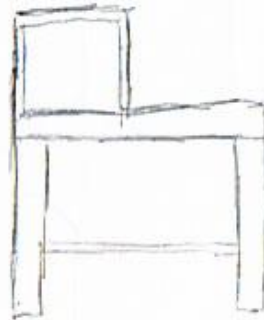


PLAN VIEW

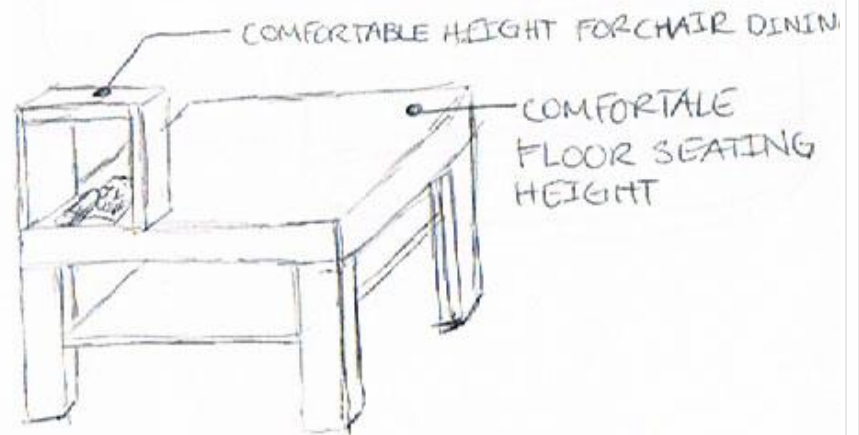
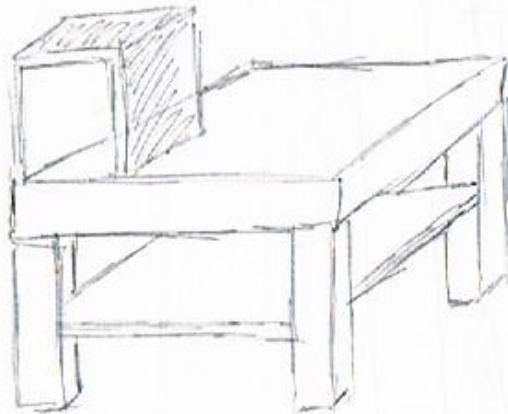


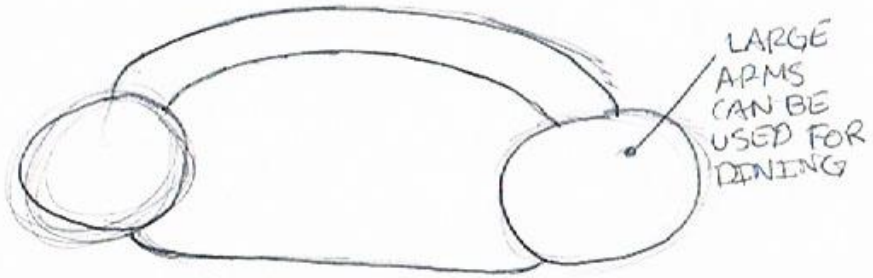


PLAN VIEW

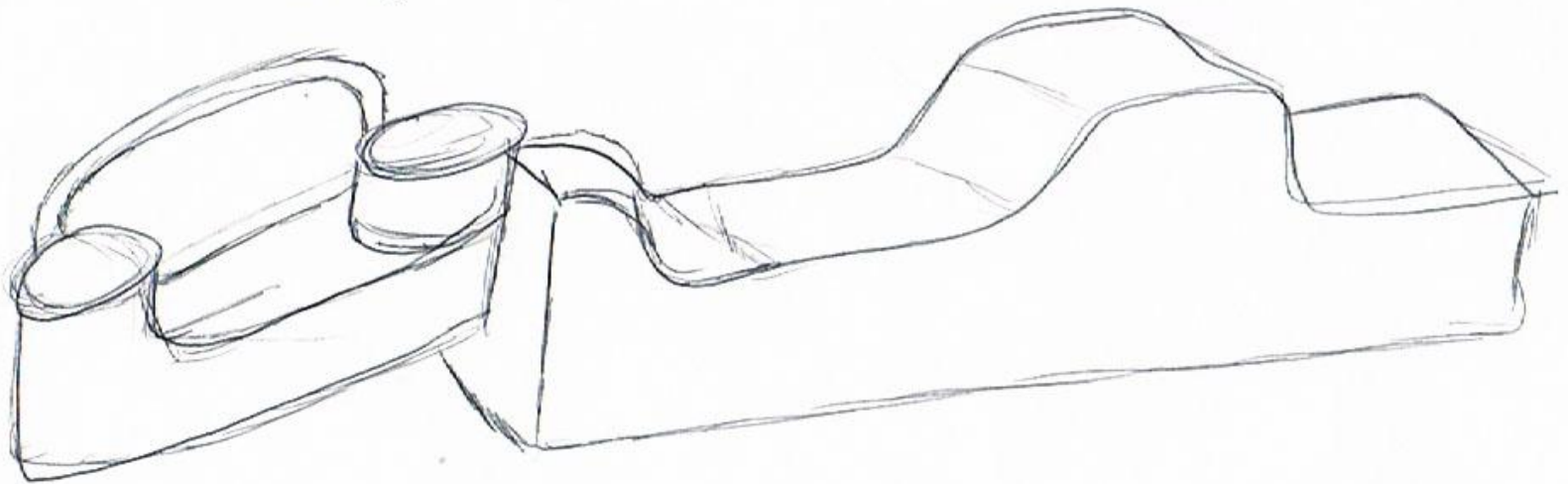


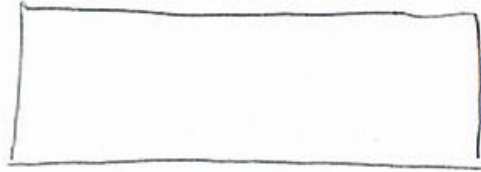
SIDE VIEW





PLAN VIEW

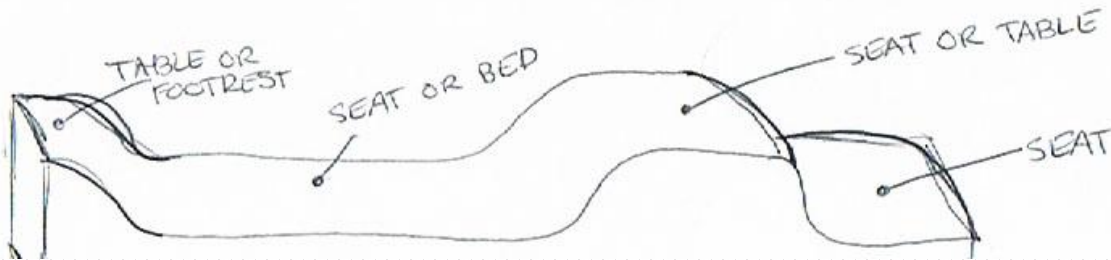
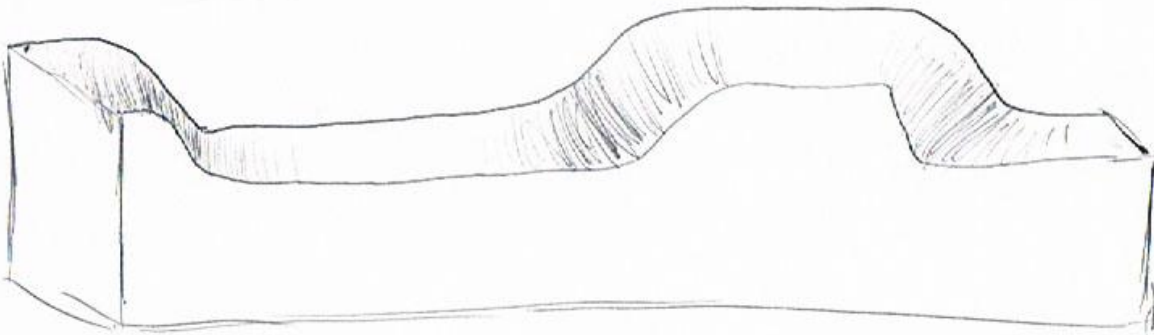


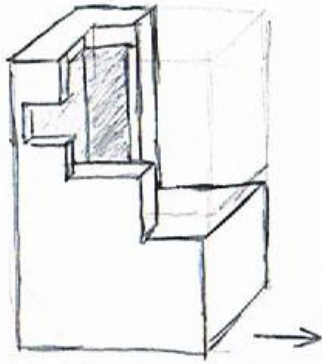


PLAN VIEW

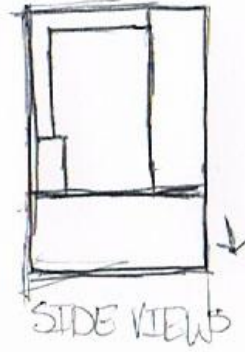


SIDE VIEW

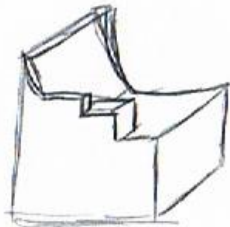
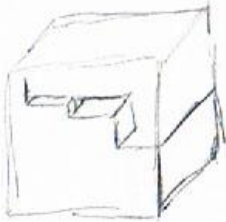
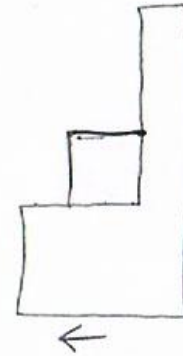
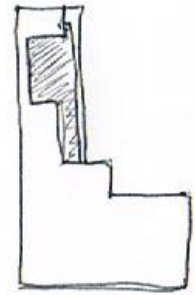
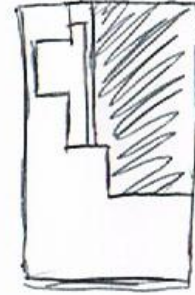




PLAN VIEW

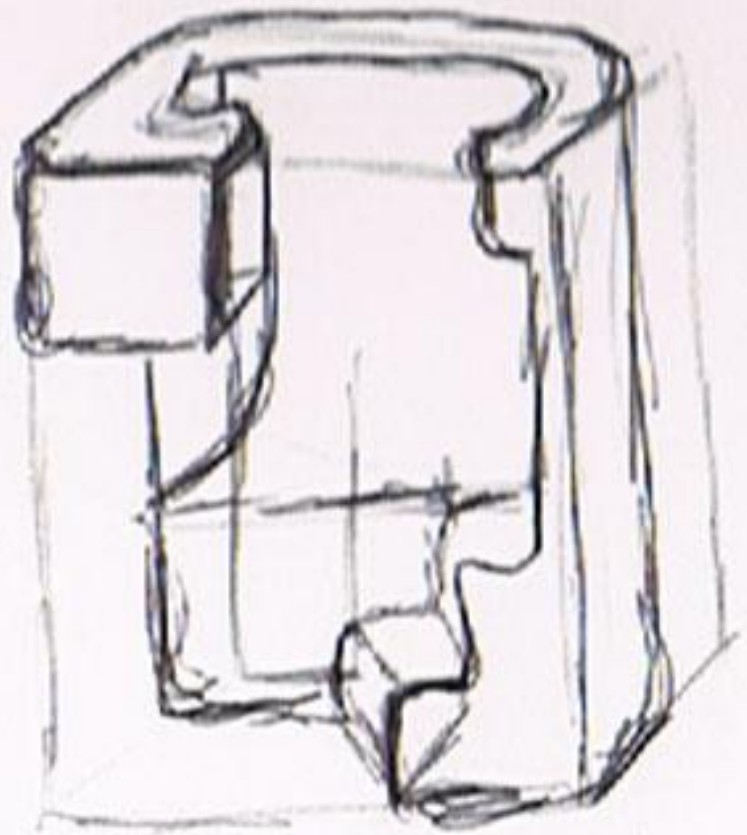


SIDE VIEWS

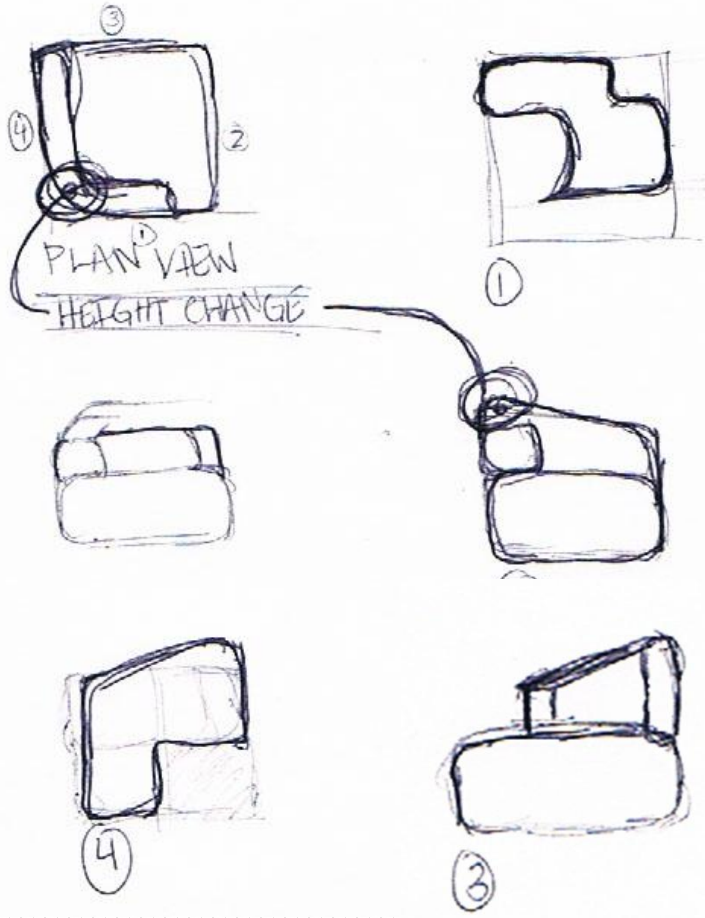




PLAN VIEW

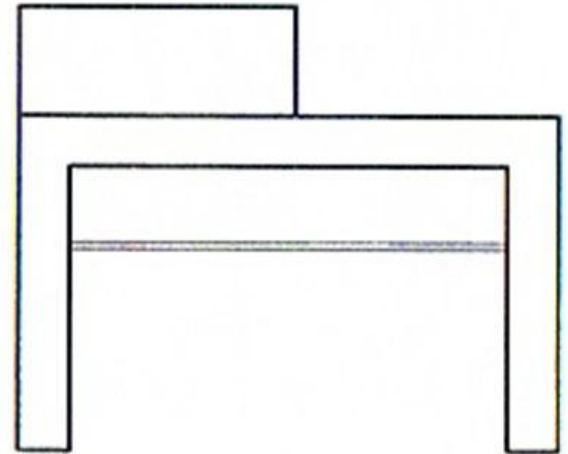
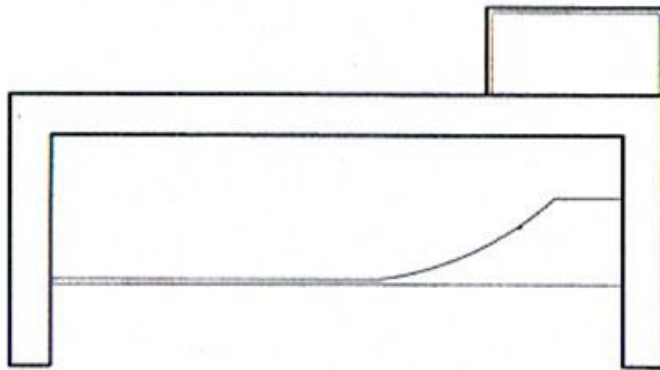
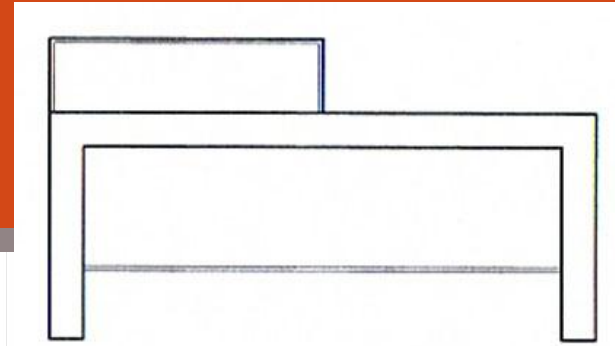
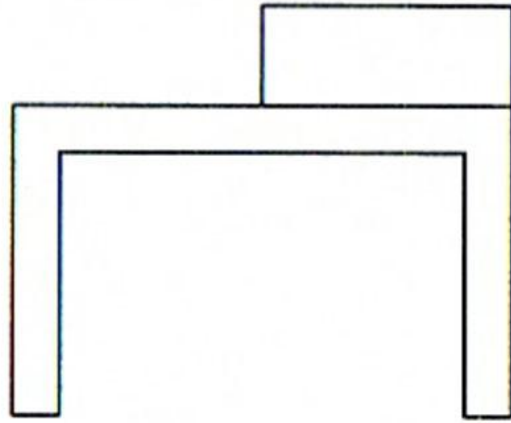
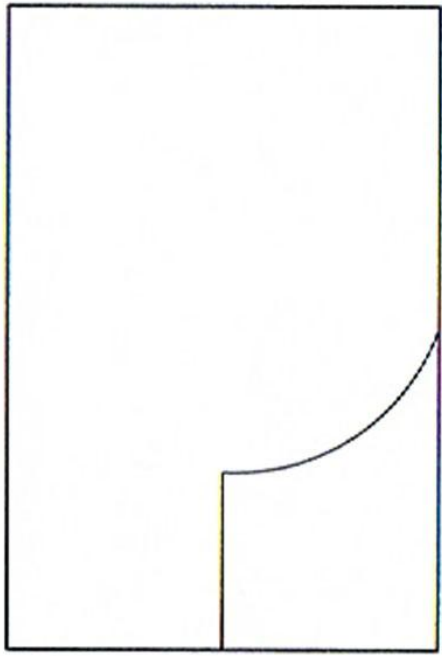


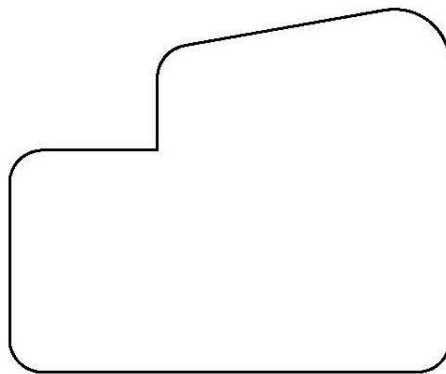
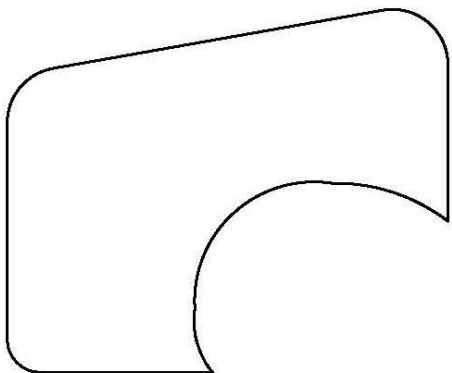
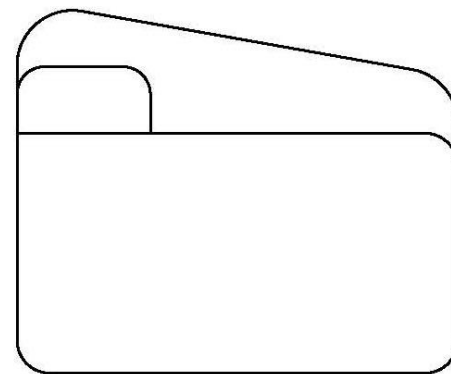
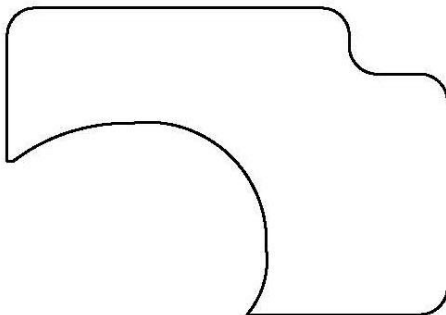
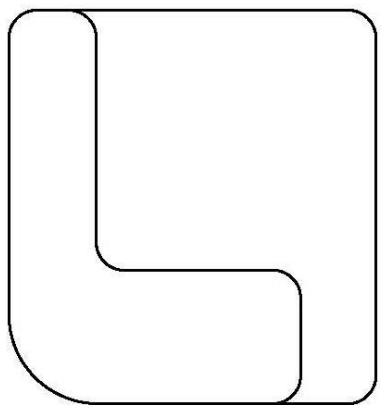
AXON VIEW

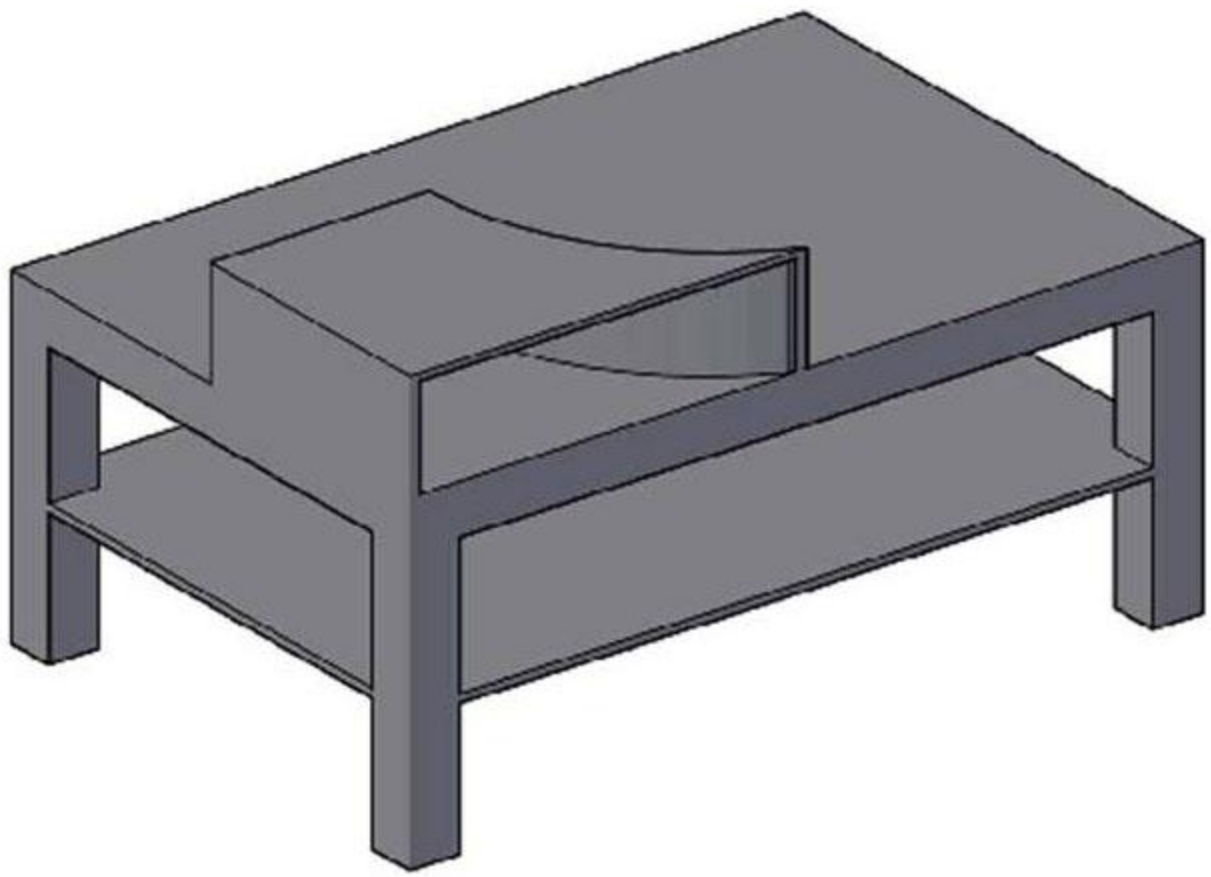


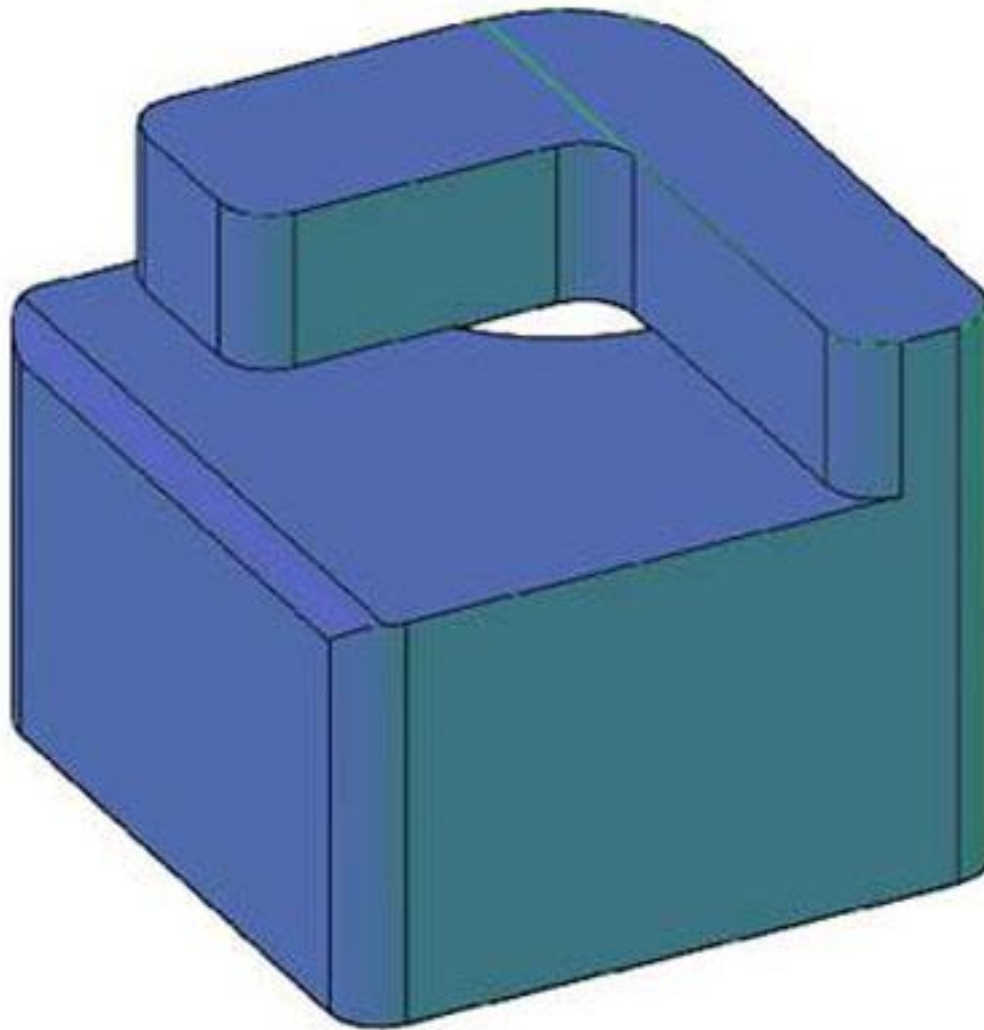


Drawings







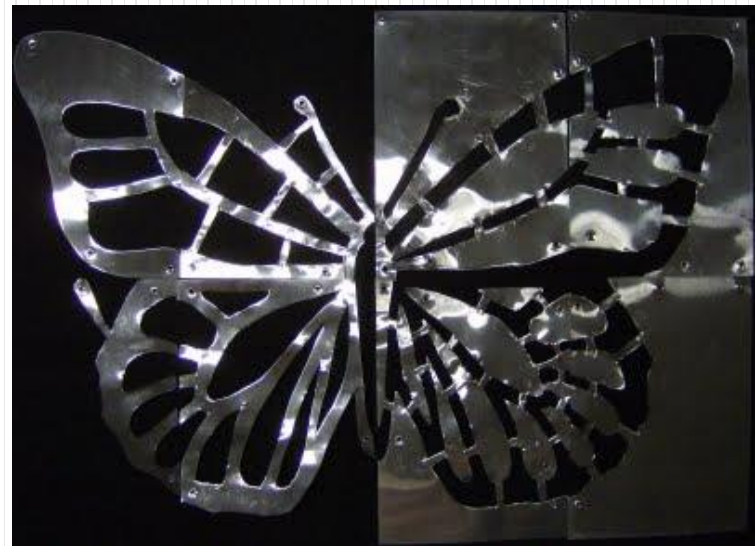




Material

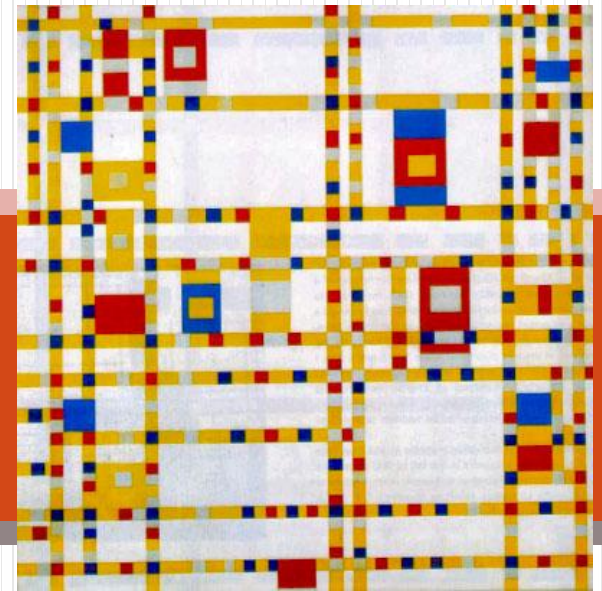
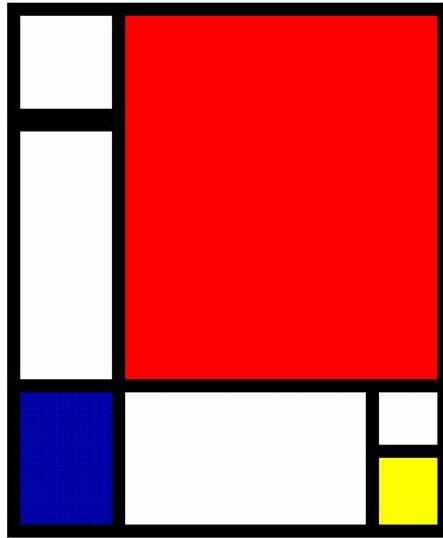
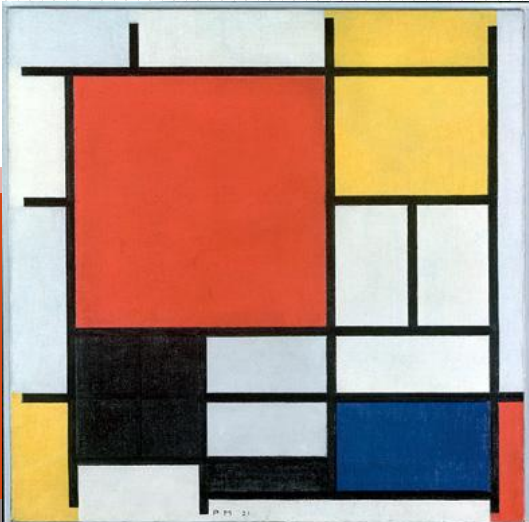


Inspirational Images





Similar Artistic Theories



Piet Mondrian - Komposition mit großer roter Fläche, Gelb, Schwarz, Grau und Blau, 1921 © Mondrian/Holtzman Trust, c/o HCR International, Warrenton VA

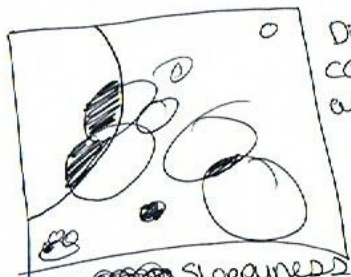


WASSILY KANDINSKY SQUARES WITH CONCENTRIC RINGS



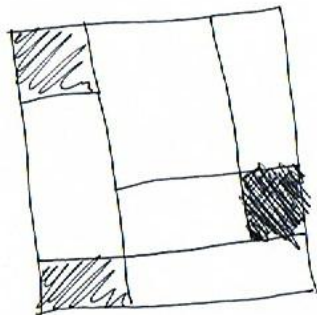


Material Sketches and Options

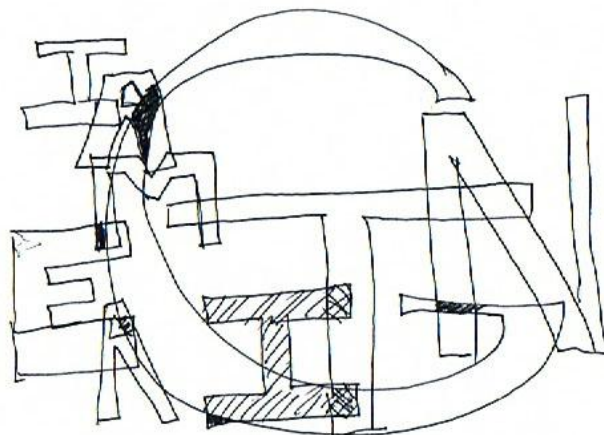


Different colors & shades and saturation

NOTE: ~~Color~~ Sloppyness is part of design.
EX: Kandinsky!

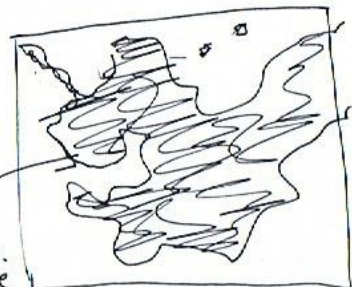


similar to Piet Mondrian



* Words & phrases, dif sizes, fonts, overlapping. Each

* Color studies!!



No distinguishing between each splash.
Only black & white.

Mix between Pollock and negative/positive ideas